



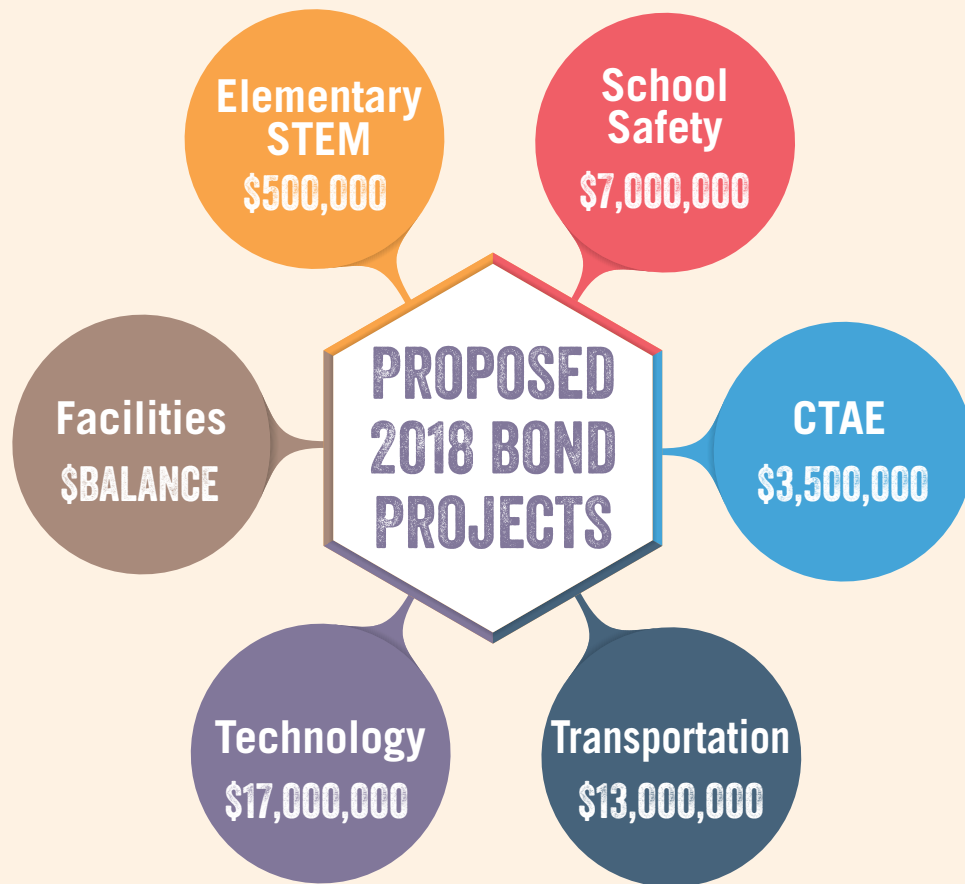
FORSYTH COUNTY SCHOOLS

48,000 students in
37 schools



7TH largest school
district in Georgia

5,300 new students over
past three years



\$323,381,497 worth of improvements
- **28,381,322** estimated state funding

\$295,000,175 bond financing

ACCOMPLISHMENTS IN GEORGIA:



- Highest ACT Score
- Highest Credit Rating from Moody's (1 of 77 in U.S.)
- 3 of 6 National Blue Ribbon Schools
- AP District Honor Roll

AMONG METRO-ATLANTA AND LARGE DISTRICTS:

HIGHEST

CCRPI*
County Graduation Rate
SAT Score
Financial Efficiency Rating (5/5 Stars)**

Millage Rate

Maintained same millage for last four years

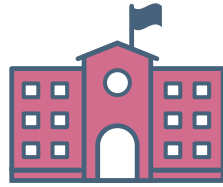
Per Pupil Expenditure

LOWEST

* Only district in Georgia to score above 90 on CCRPI for three consecutive years.
** Only district in Georgia to receive 5/5 stars for three consecutive years.

As with the 2014 bond, the financing for this bond is structured to not increase the bond debt service millage rate if the next SPLOST is extended by voters. If approved, funds would be available fall 2018 and work would begin on proposed projects continuing until 2022. If the May 22, 2018 bond is not approved by voters, the proposed projects may not be completed.

PROJECT HIGHLIGHTS



4 NEW SCHOOLS

Pooles Mill ES, ES #23*, MS #11*, East Forsyth HS **Land not purchased*
Classroom Addition at West Forsyth HS

Construct New ACADEMIES OF CREATIVE EDUCATION



Purchase New Buses
Air-Condition Existing Buses



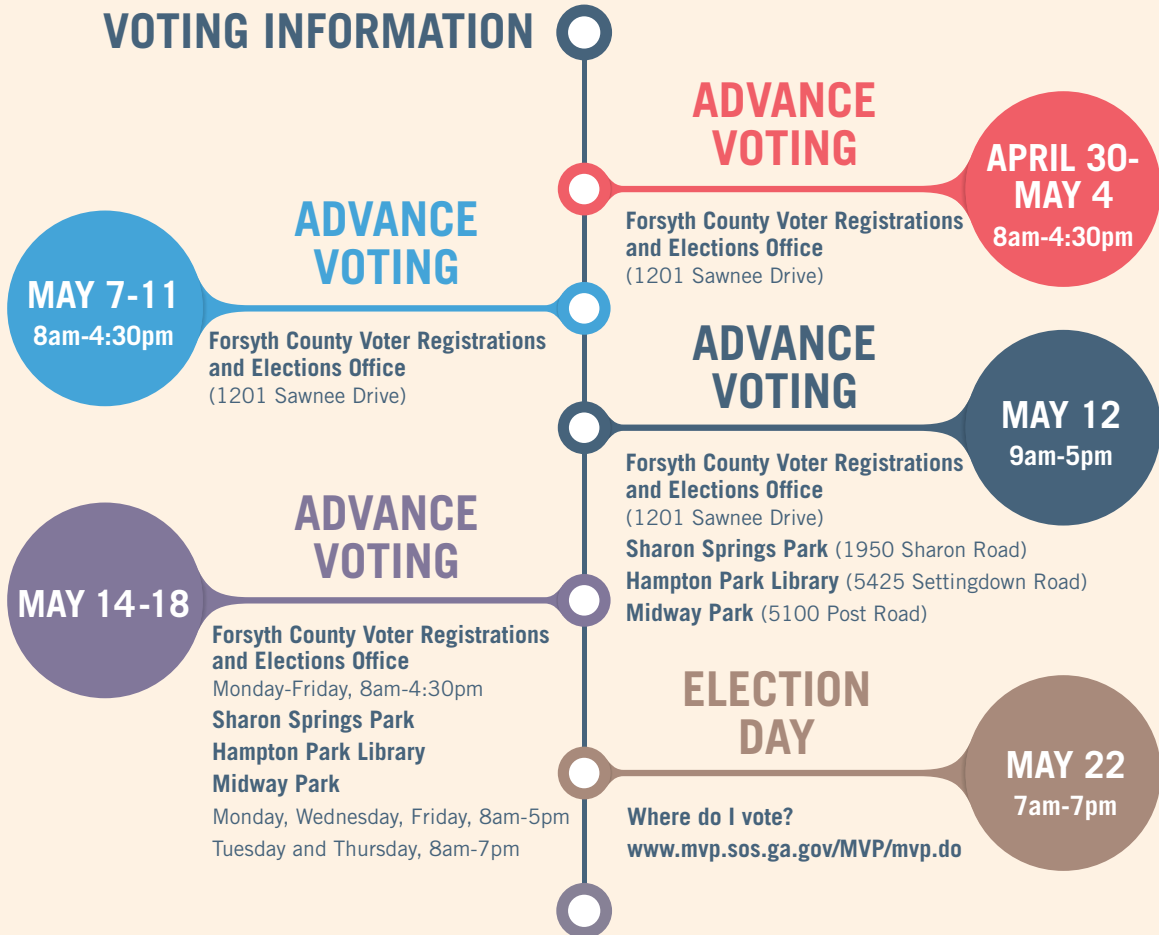
PERFORMING ARTS CENTERS

Update 3 Oldest HS PAC
Build New PAC for Districtwide Use



Safety Facility Improvements
Districtwide Technology Improvements
Replace All HS Stadium Turfs
Build Alliance Parking Deck
Maintenance Work at 30 Existing Schools
Athletic Standardization at 3 Oldest HS

VOTING INFORMATION



OUR RESPONSIBILITY - INFORMING STAKEHOLDERS

This publication is intended for informational purposes only. Forsyth County voters are encouraged to be informed before voting on Tuesday, May 22, 2018. For more information visit www.forsyth.k12.ga.us/bond.